

# 4 DROP

## STANDARD MF SERIES MANIFOLD LAYOUT

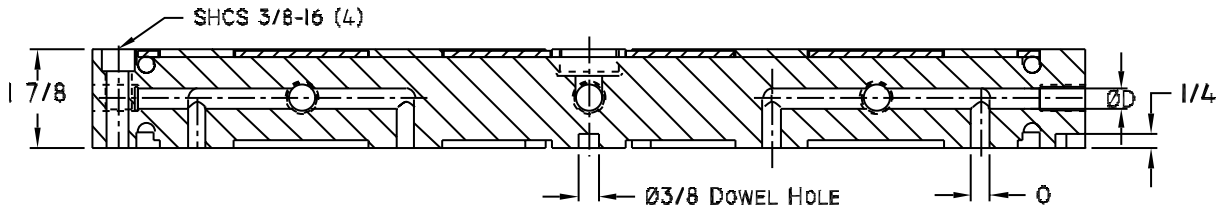
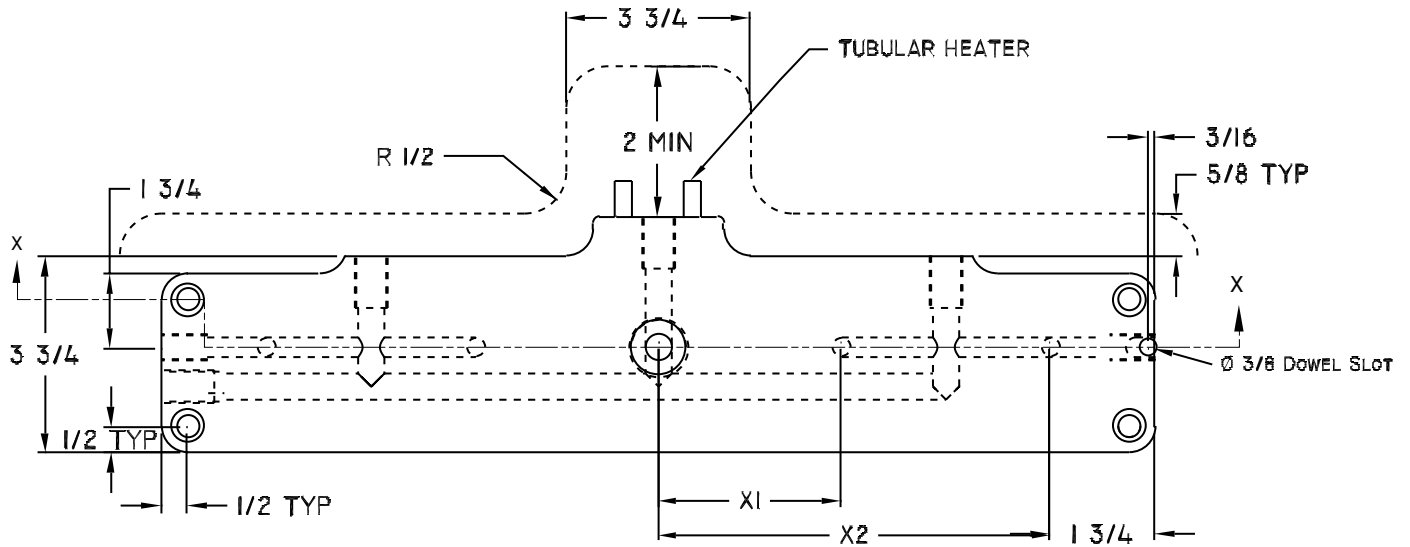
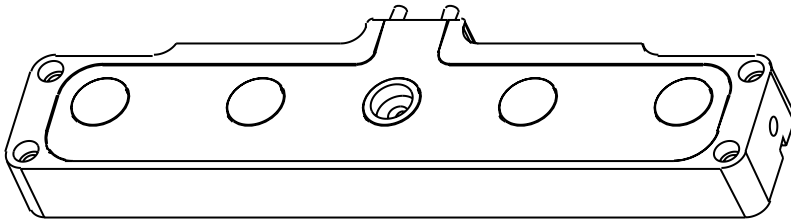
Material= AISI Type P-20

Max. Pressure= 20,000ps

MAX. TEMPERATURE= 800°F

X1 inch	X2 inch
min	max
1.5	15

MIN. DIST. BETWEEN DROPS=2 5/16"  
CALL NATIONAL FOR OTHER SIZES



SECTION X-X

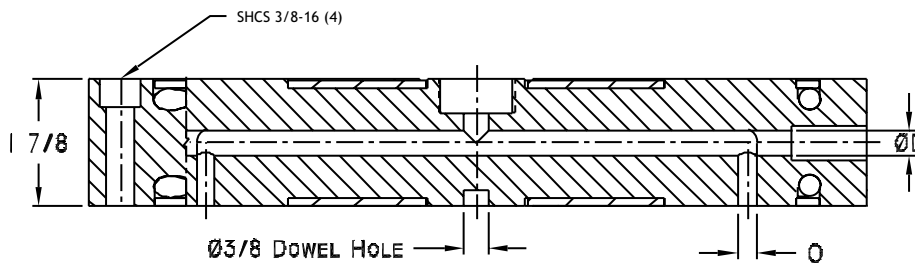
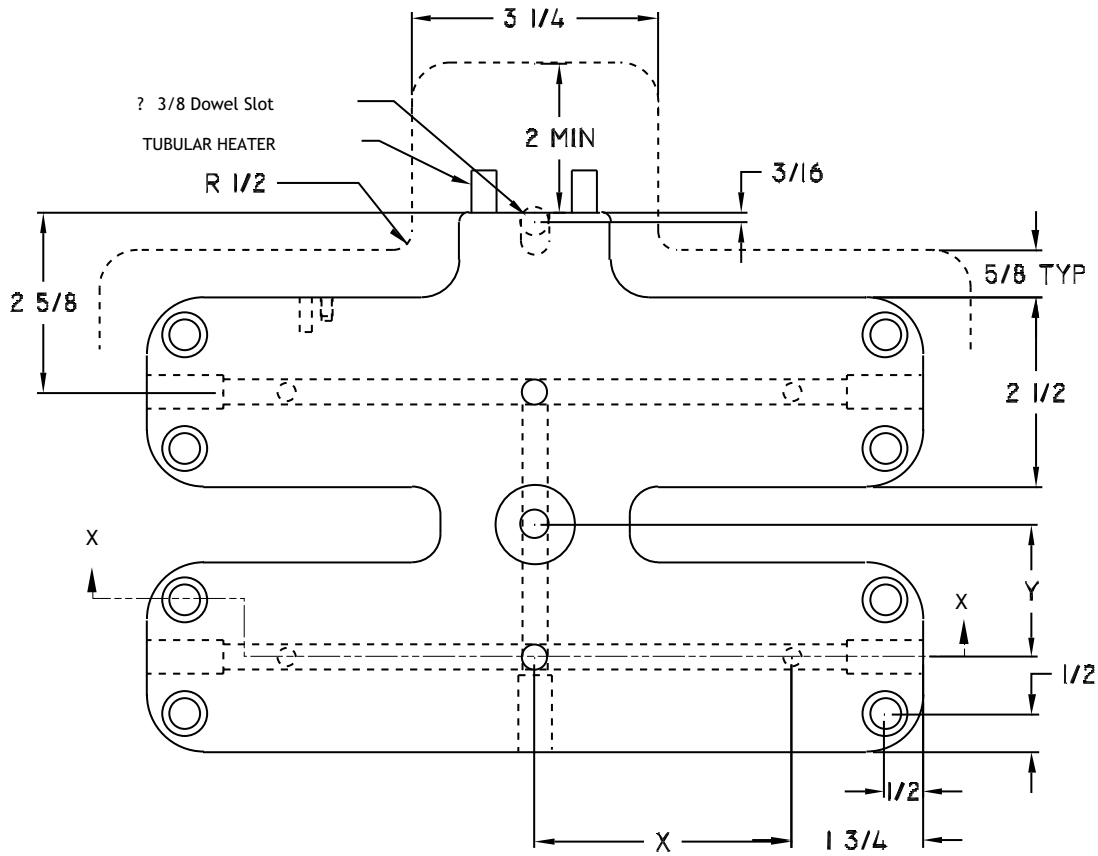
Note: Dim. "D" and "O" Varies as per Part Weight and Material.

# 4 DROP STANDARD MH SERIES MANIFOLD LAYOUT

Material= AISI Type P-20  
Max. Pressure= 20,000psi

MAX. TEMPERATURE= 800°F

X inch		Y inch	
min	max	min	max
2.312	10.00	2.312	10.00
MIN. DIST. BETWEEN DROPS=2 5/16" CALL NATIONAL FOR OTHER SIZE			



SECTION X-X

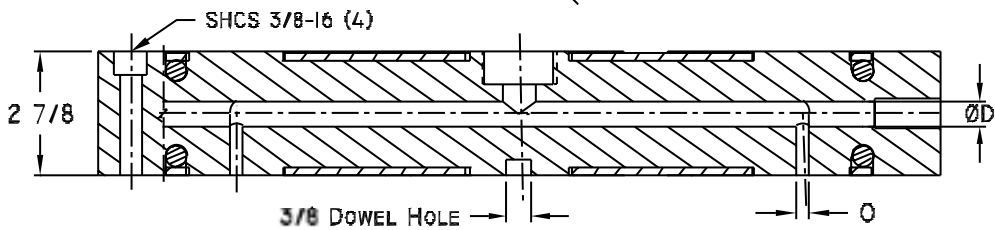
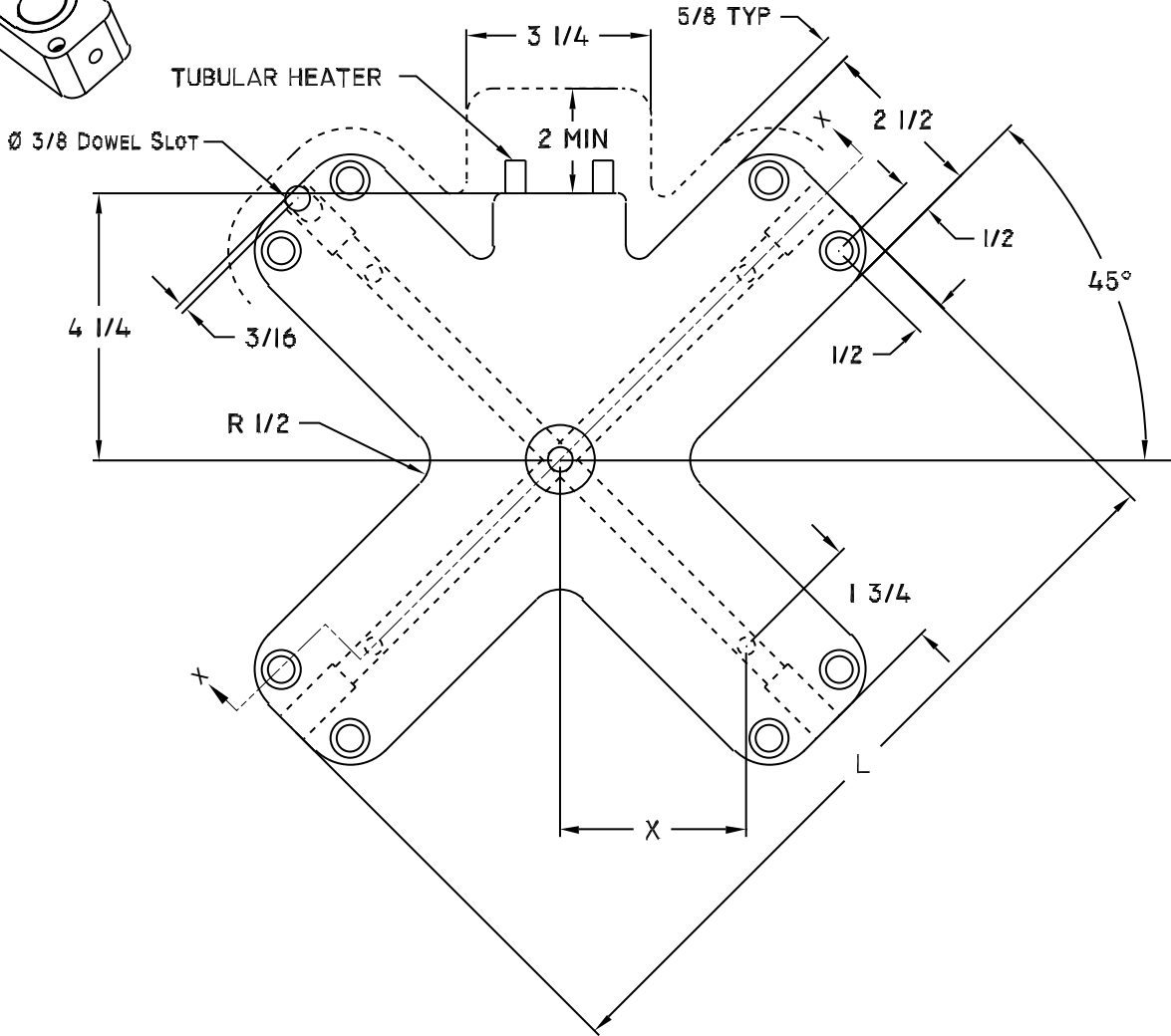
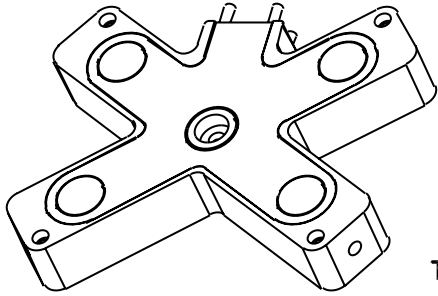
Note: Dim. "D" and "O" Varies as per Part Weight and Material

# 4 DROP STANDARD MX SERIES MANIFOLD LAYOUT

Material= AISI Type P-20  
Max. Pressure= 20,000psi  
MAX. TEMPERATURE= 800°F

CAT#	X inch		TOTAL	Price
	min	max		
MX063-17	1.75	2.00	6.375	
MX071-17	2.00	2.50	7.125	
MX076-17	2.50	3.00	7.75	
MX084-17	3.00	3.50	8.50	
MX092-17	3.50	4.00	9.25	
MX097-17	4.00	4.50	9.875	
MX105-17	4.50	5.00	10.625	
MX113-17	5.00	5.50	11.375	
MX120-17	5.50	6.00	12.00	
MX126-17	6.00	6.50	12.75	

CALL NATIONAL FOR OTHER SIZES



SECTION X-X

# 4 DROP STANDARD MZ SERIES MANIFOLD LAYOUT

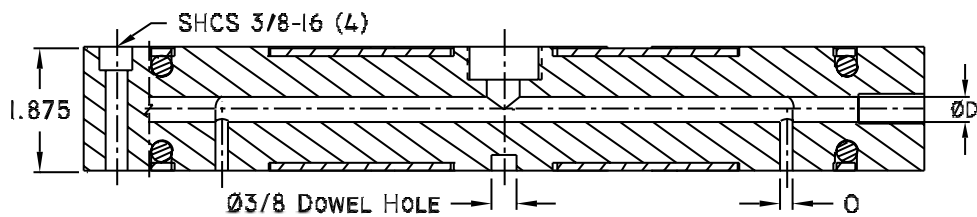
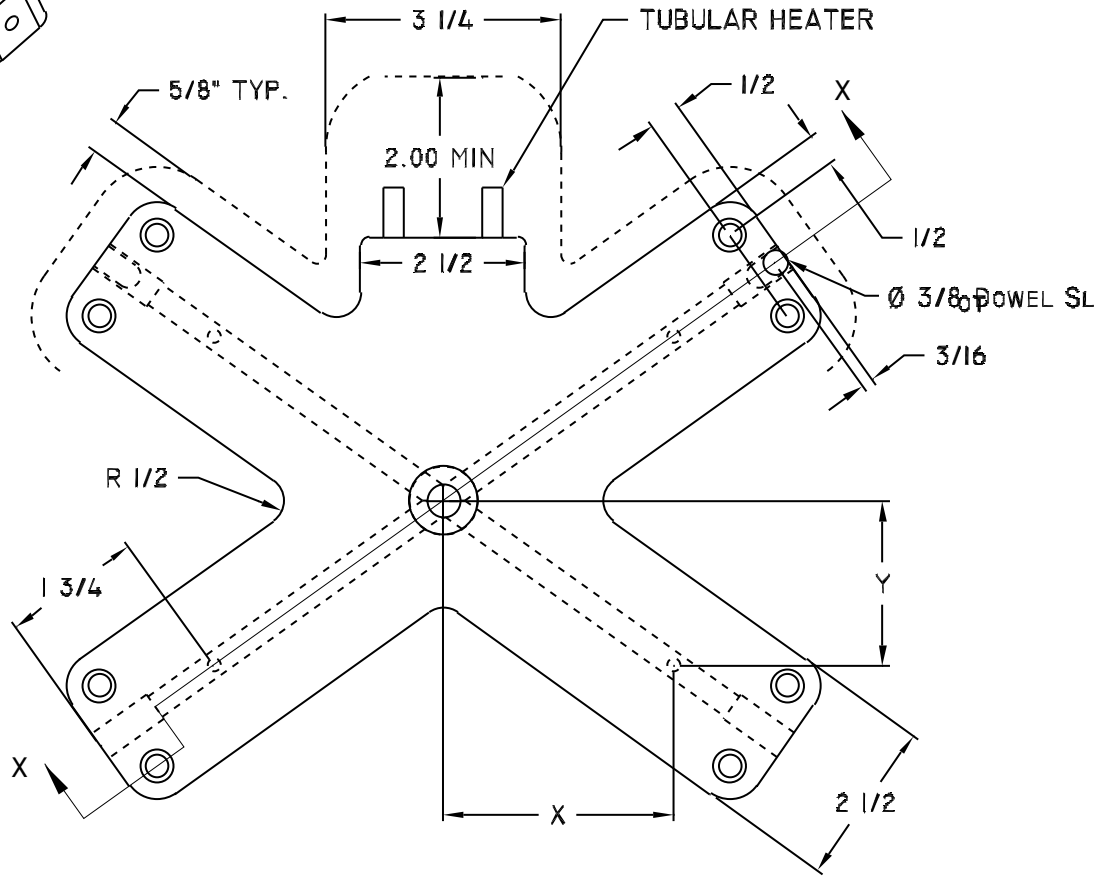
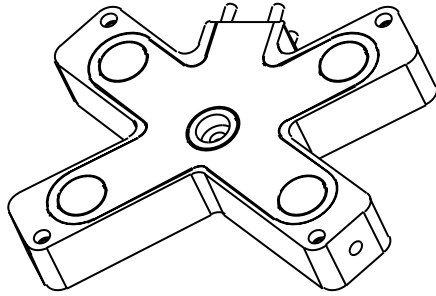
Material= AISI Type P-20

Max. Pressure= 20,000psi

MAX. TEMPERATURE= 800°F

X inch		Y inch	
min	max	min	max
2.312	10.00	2.312	10.00

MIN. DIST. BETWEEN DROPS=2 5/16"  
CALL NATIONAL FOR OTHER SIZES



SECTION X-X